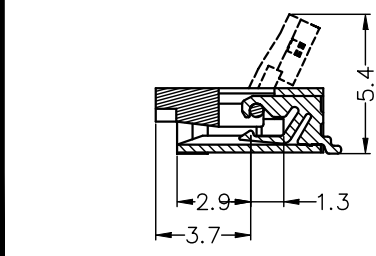
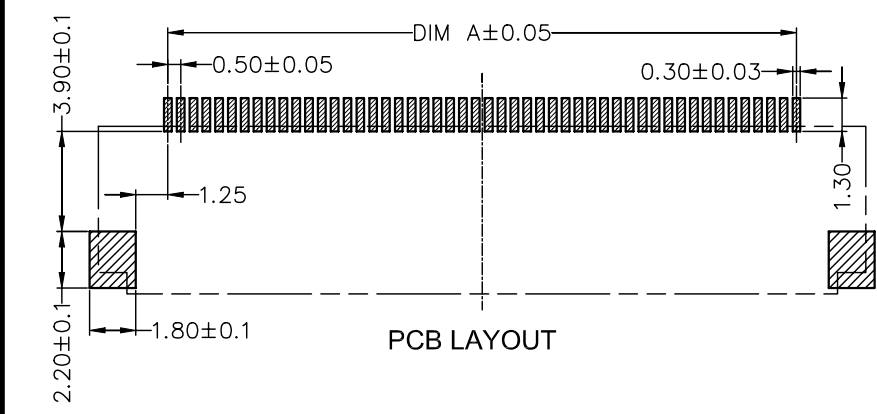
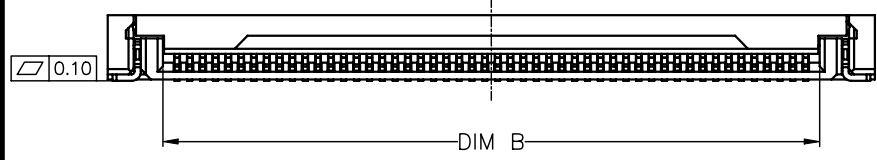
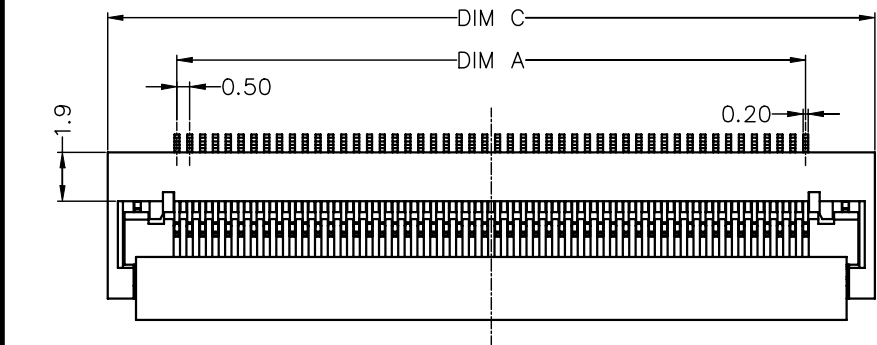


CUSTOMER

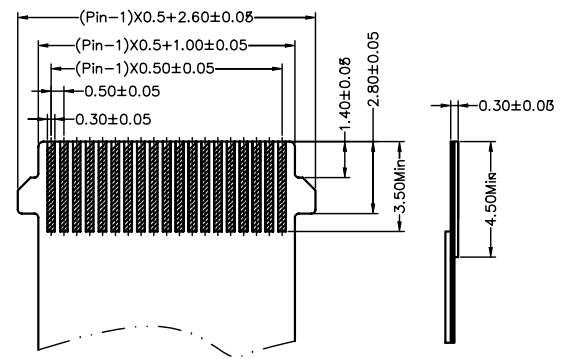
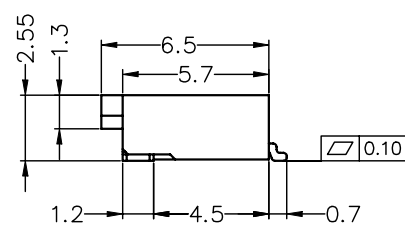
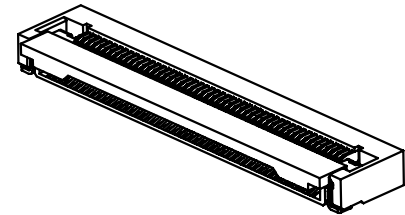
| REV. 版本 | MODIFICATION. 变更内容 | DRAWN/DATE 设计/日期 |
|---------|--------------------|------------------|
| A0      | 首次发行               | 2015.06.06       |



1034A0-\*\*\*-3P1

PIN数

1: LCP 2: PA9T  
P: 盘装 G: 管装  
1: 雾锡 2: 亮锡 3: 镀金



FFC/FPC TYPE

备注:  
 端子材质: 磷青铜, 镀金  
 接地片材质: 磷青铜, 镀锡  
 塑胶材质: 锁扣: LCP, UL94V-0, 黑色  
 主体: LCP, UL94V-0, 本色  
 额定电流: 0.5A DC  
 额定电压: 50V DC  
 温度范围: -40° C ~ +85° C  
 接触阻抗: 初始值30mΩ max.  
 环境测试后: 40mΩ max.  
 绝缘阻抗: 500MΩ min.  
 耐电压: AC 150V/rms  
 \*RoHS产品.

| No. of Contacts | A     | B     | C     | No. of Contacts | A     | B     | C     |
|-----------------|-------|-------|-------|-----------------|-------|-------|-------|
| 4               | 1.50  | 2.57  | 6.90  | 33              | 16.00 | 17.07 | 21.40 |
| 5               | 2.00  | 3.07  | 7.40  | 34              | 16.50 | 17.57 | 21.90 |
| 6               | 2.50  | 3.57  | 7.90  | 35              | 17.00 | 18.07 | 22.40 |
| 7               | 3.00  | 4.07  | 8.40  | 36              | 17.50 | 18.57 | 22.90 |
| 8               | 3.50  | 4.57  | 8.90  | 37              | 18.00 | 19.07 | 23.40 |
| 9               | 4.00  | 5.07  | 9.40  | 38              | 18.50 | 19.57 | 23.90 |
| 10              | 4.50  | 5.57  | 9.90  | 39              | 19.00 | 20.07 | 24.40 |
| 11              | 5.00  | 6.07  | 10.40 | 40              | 19.50 | 20.57 | 24.90 |
| 12              | 5.50  | 6.57  | 10.90 | 41              | 20.00 | 21.07 | 25.40 |
| 13              | 6.00  | 7.07  | 11.40 | 42              | 20.50 | 21.57 | 25.90 |
| 14              | 6.50  | 7.57  | 11.90 | 43              | 21.00 | 22.07 | 26.40 |
| 15              | 7.00  | 8.07  | 12.40 | 44              | 21.50 | 22.57 | 26.90 |
| 16              | 7.50  | 8.57  | 12.90 | 45              | 22.00 | 23.07 | 27.40 |
| 17              | 8.00  | 9.07  | 13.40 | 46              | 22.50 | 23.57 | 27.90 |
| 18              | 8.50  | 9.57  | 13.90 | 47              | 23.00 | 24.07 | 28.40 |
| 19              | 9.00  | 10.07 | 14.40 | 48              | 23.50 | 24.57 | 28.90 |
| 20              | 9.50  | 10.57 | 14.90 | 49              | 24.00 | 25.07 | 29.40 |
| 21              | 10.00 | 11.07 | 15.40 | 50              | 24.50 | 25.57 | 29.90 |
| 22              | 10.50 | 11.57 | 15.90 | 51              | 25.00 | 26.07 | 30.40 |
| 23              | 11.00 | 12.07 | 16.40 | 52              | 25.50 | 26.57 | 30.90 |
| 24              | 11.50 | 12.57 | 16.90 | 53              | 26.00 | 27.07 | 31.40 |
| 25              | 12.00 | 13.07 | 17.40 | 54              | 26.50 | 27.57 | 31.90 |
| 26              | 12.50 | 13.57 | 17.90 | 55              | 27.00 | 28.07 | 32.40 |
| 27              | 13.00 | 14.07 | 18.40 | 56              | 27.50 | 28.57 | 32.90 |
| 28              | 13.50 | 14.57 | 18.90 | 57              | 28.00 | 29.07 | 33.40 |
| 29              | 14.00 | 15.07 | 19.40 | 58              | 28.50 | 29.57 | 33.90 |
| 30              | 14.50 | 15.57 | 19.90 | 59              | 29.00 | 30.07 | 34.40 |
| 31              | 15.00 | 16.07 | 20.40 | 60              | 29.50 | 30.57 | 34.90 |
| 32              | 15.50 | 16.57 | 20.90 |                 |       |       |       |

|   |                                     |                              |
|---|-------------------------------------|------------------------------|
| GENERAL TOLERANCE                               | ANGLE TOLERANCE                     | DESIGN. 唐华民<br>设计 2015.06.06 |
| X. ±0.30<br>.X ±0.25<br>.XX ±0.15<br>.XXX ±0.10 | X° ±5.0°<br>.X° ±3.0°<br>.XX° ±2.0° | CHECKED. 审核                  |
| UNIT:mm   | SCALE 1:1                           | APPROVED. 核准                 |
| A4  | SHEET:1of1                          |                              |

|                 |                           |
|-----------------|---------------------------|
| 深圳扬讯电子有限公司      |                           |
| FILE NAME. 品名   | 0.5Pitch 2.5H ZIF 车载翻盖SMT |
| PART NUMBER. 料号 | 1034A0-***-3P1            |
| MDRAWING NO. 图号 | 1034A0                    |
|                 | REV. A0                   |